

# Newbury House Family Centre CLG

## Mayfield Arts – Baile Beag

### Directors' Annual Report 2021

Charity Number CHY 9010

Charity Registration Number: 20022563

CRO Number: 296442



Newbury House Family Centre CLG  
Old Youghal Road  
Mayfield  
Cork  
[admin@newburyhouse.ie](mailto:admin@newburyhouse.ie)  
Tel: 021-4507999 / 083-8198724

Mayfield Arts  
[mayfieldarts@gmail.com](mailto:mayfieldarts@gmail.com)  
Tel: 021-4530434  
Baile Beag  
[creche@newburyhouse.ie](mailto:creche@newburyhouse.ie)  
Tel: 021-4507999



Funded by the Irish Government under the National Development Plan

## Contents

Chairperson Statement	2
Newbury's Purpose and Activities	3
Achievements and Performance	8
Financial Review	21
Structure, Governance & Management	22
Contact and official details	26
Unusual movements	27
SORP Guidelines	27

## Section 1

### Chairperson Statement

On behalf of the board of directors, it gives me great pleasure to present our annual report for 2021.

2021 was a challenging year for Newbury House as the whole world was in the middle of the Covid-19 pandemic. Newbury continued to provide services, throughout the year, albeit in a very different manner than our normal face to face service provision.

In 2021, our childcare service provided direct service all year. For a limited number of months we provided a service only to parents in certain categories as defined by the government. Eg. Essential workers and parents of certain categories of disadvantage. In April we resumed full service to all our parents.

Mayfield Arts closed to the public until June when the ETB were granted exemptions to commence courses. Our centre responded to opening for adults for the summer months, and providing new taster courses.

Our family centre continued to operate all year albeit, limited to one to one service, phone and online service. All our therapies continued operating all of 2021 as they met the requirements for essential services.

Our service adapted to the public by making structural changes and enforcing a covid response plan to minimise the risk of covid impacting our service users and operation of our services.

The challenge for Newbury is to make our resources work as effectively as possible to ensure all aspects of governance, compliance, standards and service are in place and regularly reviewed and monitored.

I want to acknowledge our appreciation of my fellow board members, for everyone involved in Newbury House including, staff, therapists, facilitators and Community Employment workers, who stepped up and adapted to the changes required during challenging situations that presented themselves in order to provide the best service possible in 2021 for the great work that they did during the year.

On behalf of the board of Newbury House I want to express appreciation for all the support both financial and otherwise that our funders provided and also many other groups and individuals who contributed to the service in many various ways.

Mar Davis  
Chairperson

## Section 2

### Organisations Purpose and Activities

The main purpose for which the Company was established to promote, operate and provide child and family and community support in the Mayfield and surrounding areas in the City of Cork through the provision of family and community supports, childcare facilities, community arts programme and educational courses.

#### **Key objectives in Constitution**

- Newbury House Family Centre Ltd. aims to improve and maintain the quality of life for all in Mayfield and the surrounding area by providing quality services, efficiently delivered in a non-judgmental manner.
- To promote an inclusive and equality focused environment which will strive to lessen social, emotional and financial disadvantage
- To respond to the changing needs of people in the locality
- To support the ethos of Community Development in the Mayfield Area
- To support individual and families in the Community
- To ensure availability and access to quality childcare
- To support and encourage the development of education and training opportunities in the Mayfield Area
- To encourage and support local persons in the acquisition of employment

#### **Key objectives with funders**

- To provide programmes, activities and initiatives to help improve the physical, emotional and mental well-being of the local community
- Early intervention and prevention work with families and individuals or at least provide skill set, tools, service and resilience to enable children and adults cope with current and future crisis's
- Aim to promote and protect the health, well-being and rights of all children, young people and their families with giving particular attention to those who are vulnerable or at risk.
- Help families work through difficult issues, ensure children have a stable environment to live in and provide support to parents/guardians who are finding it hard to cope and improve the functionality of the family unit.
- Working inclusively with individuals, families and communities.
- Involvement of local people in identifying needs and developing needs-led responses. To identify and address the needs within our local area
- Involve people from marginalized groups and areas of disadvantage on our voluntary committee and activities
- Provide a range of universal and targeted services and development opportunities that address needs of families and individuals. Provision of information, advice and support to target groups and families
- Information concerning the range of services and development options available locally.
- Act as a focal point for onward referrals to main stream service providers

- Delivering education courses, training, student placement and work experience opportunities
- Developing capacity and leadership within communities
- Supporting personal and group development
- Practical assistance to individuals and community groups
- Support networking within the community.
- Advance and support the development and well-being of people with disabilities through participation in all creative and recreational activities
- Provision of early years for 1 year olds to school aged children.
- Childcare to provide a service accessible to local families to meet their ever evolving needs
- Support creative learning opportunities for 0 to 3 year olds and enhance early year's education and learning.
- meet the childcare and family support needs of local families particular to this RAPID designated area.
- Delivering inclusive arts programmes to all members of the local community in our accessible community setting
- Delivering arts and creativity programmes to engage with socially excluded groups.
- Collaborate with other organisations to deliver services and activities to the community
- Participate in interagency organisations
- Target the most disadvantaged communities in the local area.
- Delivery services at a local level – childcare, men's groups, arts activities etc.
- Provide links/referrals to other services that might meet the needs of individuals or families.
- To provide services to aid mental and physical health and well-being

### **Core values**

- Be inclusive of service users, local people and groups to avail of our services and to encourage participation, volunteerism and a sense of belonging.
- Operate on community development principles of social justice, self-determination, working and learning together, sustainable communities, participation and reflective practice
- Promote social inclusion and collaborative
- Encourage diversity and creativity in thought and action.
- Support families in a professional, fair and compassionate manner, whilst respecting the need for confidentiality and discretion
- Work to make a real difference in the lives of families, individuals and groups using our services and facilities and the wider community.

## Main activities in relation to purpose and key objectives



### Family Service

- Family Support
- Low cost Counselling service
- Tusla Meitheal Lead practitioner support and referral to service
- Community education. Non Certified Courses for parents and local community including Healthy Cookery, Yoga, Art Classes, Stress Management Local Activities including organising Christmas Events, Arts Exhibitions,
- Referral and advisory support
- Health focused workshops and programmes
- Irish Cancer Society Women's Quit Smoking Programme
- Venue for Parent/Carer Toddler Groups
- Direct support in crisis
- Referrals to HSE, SVP, disability specialists and other expert
- Provision of alternative therapies and support other than the traditional medical and counselling intervention
- Linking in with local services, PHN's, social workers, youth organisations, NYP etc.
- Volunteer board training for groups in Mayfield Networking with local groups, schools, network e.g. Cork Community Health Network
- Support Service & Venue for Mayfield Men's Shed meetings
- Direct Family Support
- Community events such as Family Fund Day and Learning Neighbourhood events
- work with a number of families throughout the year. The level of support each family requires varies significantly.
- Participating with Mayfield Learning Neighbourhood 2018 Participation in Cork City PPN – Public Participation Network
- Venue for Art Therapy, Overeaters Anonymous meetings and many more local groups

### AIMS

- To provide a quality child centered childcare service
- To empower children through their own learning
- To recognise that parents are the primary educators and to work in partnership with them.
- To provide childcare to children with special needs.
- To integrate children from diverse social and ethnic backgrounds, religions or on low incomes.
- To value children
- To provide a secure, safe and comfortable environment for children

We aim to provide a range of learning opportunities for children through the High/Scope programme

Provision of childcare services including

- Baile Beag crèche that provides part time childcare facilities for 1-3years old for local families in our disadvantaged community with family support.
  - Provides 15 spaces from 9am-1pm 48 weeks of the year
  - Provides early intervention and prevention support to children and their families
  - Provides childcare spaces to families referred from other services example TUSLA, Cope etc.
  - Provides childcare space to children with additional needs.
  - Facilities include:
    - Large bright and colourful learning room
    - Adjoining natural outdoor play area
    - Adjoining sleeping room
- Newbury preschool that provides various options in hours for children 3- school aged for local families.
  - Provides 22 spaces in the morning and up to 16 in the afternoon with full time spaces available.
  - 9am-5pm for 45 weeks of the year.
  - Provides Easter and Summer camps available to both all year registered children plus newly registered children
  - Provides childcare spaces to families referred from other services example TUSLA, Cope etc.
  - Provides childcare space to children with additional needs.
  - Facilities include:
    - Large fully fenced, well equipped outdoor space including playground with safety surface and adjoining large natural outdoor play area and outdoor roofed area for all weather play and learning
    - 3 large, bright spacious rooms
    - Safety fencing
    - Healthy and nutritious hot food for dinner time
    - Training and qualified staff who partake in continuous development

- Link with other organisations to attain support for individuals and families Crisis support, early intervention and prevention support
- Healthy Ireland Smart Start Family and Individual Support

## Mayfield Arts

Dedicated Arts Centre.

Mayfield Arts Centre, Newbury House provides the community with access to art activities and processes which enable expression, engagement, exploration of opinions on issues and topics relevant to the artists. We work to enrich the community by increasing awareness of the value and diversity of artistic expression.

Mayfield Arts has a long record of delivery of innovative projects to high artistic standard and have quality and evaluations systems in place to ensure this (e.g. QQI quality assurance) We are experienced in developing business plans and strategies for our main programmes. Mayfield Arts continuously evolves and is currently in a new planning and development phase in consultation with local and national experts in the broader Arts Community

- QQI level 2 and 3 Courses – in Drawing, Art and Design, Textiles, Printmaking and Outdoor Crop Production.
- non-certified courses e.g. Arts Classes (painting and printmaking and ceramics)
- Arts classes for the local community
- Tailored art classes for groups e.g. Mayfield Training Centre and Irish Wheelchair Association
- Community Events E.g. Mayfield Fun Day, Camps, Outreach Projects in local schools e.g. Creative Engagement Film projects etc.
- Space for Art Therapy, Art Journaling and other art related courses and events
- Arts Murals with local teenagers and also local community groups e.g. Brothers of Charity
- Space for Art Therapy and other art related courses
- Participating with Mayfield Learning Neighbourhood 2018 Events
- Summer and Easter camps for young children and teenagers
- encourages access and first time participation in the arts through outreach and local cooperation
- Provide recognition of local arts and to bring arts to the local community through exhibitions, training & events
- We promote collaboration between artists with high standards of arts practice, high standards of communication and facilitation skills, with local communities.
- We promote public art and public engagement with the arts through accessing funding and facilitating projects
- Encourage development of talent through providing training and workshops in a variety of art forms (including our QQI courses)
- Promote awareness of inclusivity and cultural diversity through themed creative workshops/exchange projects—linking with schools and youth groups and providing resources and training
- Promote community arts activity by presenting models of good practice and community arts training

## Target Groups

Disadvantaged Children and Families  
Lone Parents

Travellers and Roma  
The Disengaged from the Labour Market (Economically Inactive)



Low Income Workers/Households  
 New Communities  
 Elderly  
 Disadvantaged Young People (aged 15 – 24)  
 People with Disabilities  
 Disadvantaged Women

The Unemployed  
 General Public  
 People living in Disadvantaged Communities  
 Disadvantaged Children (aged 0 – 14),  
 LGBTI Community  
 Emerging Needs Group

### Section 3

### Achievements & Performance

Service/Activity	Nos. Availing	Frequency	Charge for Service	Hardiker Model Level 1-5
Preschool	49 children 49 Families	Daily	Free or low subsidised cost	1-2
Parent & Child Wellbeing group	6	Weekly	Free	1
Meitheal	20	On demand	Free	2-3
Family Support	140	Ad hoc	Free	1-2
Social Work Involvement	17	On demand	Free	3
Courses/workshops	149+	Vary	Free	1
Quit Smoking	12	Weekly-8 week programme	Free	2
Arts Children Camps	40	Non-school terms	Low cost	1
Art Therapy	12 -109 sessions	weekly	Low cost/Free	2
Play Therapy	29- 120 sessions	Weekly	Low cost/free	2
Psychotherapy	28-303 sessions	weekly	Low cost/free	2
Crèche	49 children 47 families	Daily	Low cost	1-2
Outreach				
St Mary's of the Isle	10+			

## Mayfield Arts

### Sample of activities in 2021

#### 2021 Mayfield Art Centre Activities



2021 was a busy year for us in Mayfield Arts Centre .Although classes were suspended again due to restrictions in early 2021- we maintained contact with our learners and were able to resume in house classes in early June because of our outdoor facilities eg Marquee, Garden and the size and scope of our indoor facilities. This allowed us to complete some previous QQI classes and introduce a number of extra Summer activities in 2021. We also started our Autumn term earlier than usual this year and ran extra QQI classes right up to the end of Dec.



#### BTEI and Community Education.

- **QQI Courses** in Level 4 Painting, Level3 Textiles, Printmaking, Drawing, and Art and Design. **50+adults of all abilities and ages (18-82)** In house classes
- **QQI: Level 2 FULL Major General Learning Award** ( 2.5 year programme in Craft, Shape and Space, Visual Art, Design) Also includes QQI Level 2 LITERACY Modules onsite in collaboration with Write- On. **14 young adults with learning difficulties**( and their 6 support workers) Age 18-30 . Onsite and Emails/ Worksheets
- **Open Studio Workshops** ( Watercolour/ Pastels etc) : Ages 19-76 **25+ adults mixed abilities**



- **Summer Taster Classes** in Mixedmedia, Painting, Collage, Drawing, Printmaking : Ages23-75, 20adults(retired/re-training/ unemployed/renewed or new interest in Art after Lockdown)



**Tuesday night Painting class** Ages 45- 80 10+ adults

**Workshops with various local groups** : eg Muck-In Tile project with Cork Creates ( Davy Dummigan), Foroige: Age 14-85 30+ people.



## CHILDREN AND TEENS

**Teen 'Don't waste my Community ' Camp:** Exploring Environmental issues as part of Keep Mayfield Clean initiative - Filmmaking/ Art/ Upcycling : in collaboration with Cork Environmental Forum, Frameworks Films and Mayfield Foroige, f Cork City Council and Cork City Partnership . (Ages 12- 18), **15 young people and 10 adults**



**Creative Kids Summer Camps:** Ages 5 -12 , **20 children**

**Creative Kids Halloween Camp:** Ages 5-12 , **20 Children**

**Schools Outreach program :** Visual Arts Workshops with local schools. Not as many as we had originally planned for this year **20 + children**





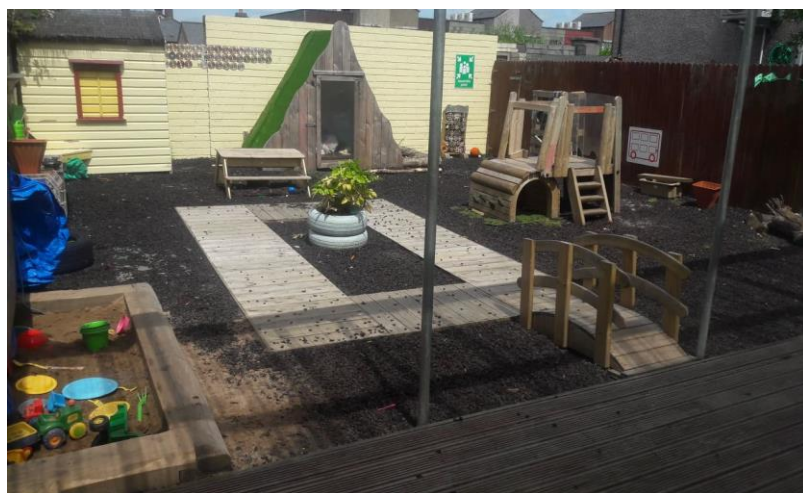
OTHER GROUPS : Due to the scope, safety and reputation of our Centre, this year we have been able to accommodate a number of local groups whose values and activities are compatible with ours and our space was being used by **a dance group Oct- Dec**, also **hosted a local Gardening training group** over the summer.

Our staff and learners also took part in the **Presidents 'Bulbs for Bees ' Challenge** in October **30+ adults**



### **Baile Beag**

In 2021, a review of Baile Beag in consultation with staff resulted in minor changes in operation including changes to opening hours, staffing & room structure to address needs that were evident to the smooth operation of the crèche. In September 2021 Baile Beag had a successful TUSLA inspection.



Primary aim for 2021 was for Baile Beag to continuing providing a high quality childcare service that targets families from the local area and enhance and provide family support and activities.



## Newbury Preschool



In 2021 our preschool remained open for families throughout the whole year despite the pressure of covid-19 being present in the community. Our staff enthusiastically ran many activities for the children whilst also stepping up to meet the safety measures required to minimise the impact of covid-19 on our service.

Staff undertook training to adapt to the challenges they met at work during this pandemic eg workforce resilience training and updating the FAR First aid training.

Covered outdoor area was improved to facilitate more outdoor play as per the covid-19 recommendations.



Sensory room was further developed to meet the ever growing needs of our children.

Summer Camp ran in August In the preschool but was limited to children already attending the service due to the risks of covid-19 in the community whereas normally we open the camp to new children.



## Family Centre

2021 was an incredible busy year for the family centre.

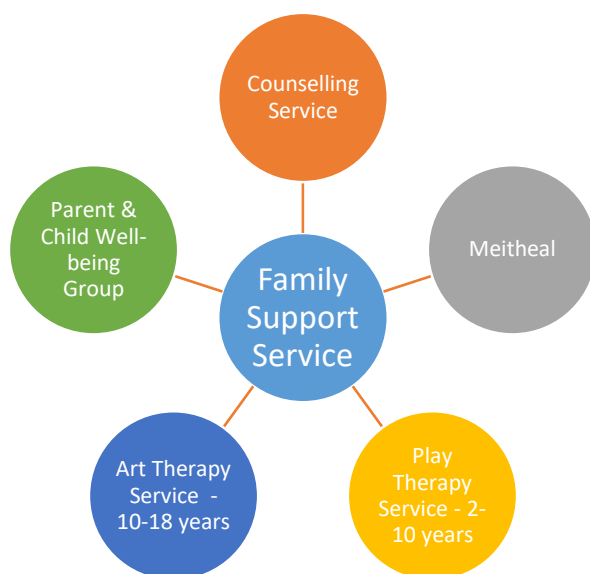
Below are some of Newbury's activities for 2021

## **Newbury House Family Support Services Report - 2021**

### **Introduction:**

Family Support is a style of work and a wide range of activities that strengthen positive informal social networks through community based programmes and services. The main focus of these services is on early intervention aiming to

promote and protect the health, well-being and rights of all children, young people and their families. At the same time particular attention is given to those who are vulnerable or at risk. Family Support Services are for families and individuals who need help. Family life is not always easy. Life events like birth, death, depression, redundancy, separation, illness, abuse or financial problems all put stress and strain on family life and relationships.



*Newbury House Family Support Service offers a wide ranging service including –Family Support Worker, Meitheal Lead Practitioner, Psychotherapy, Play Therapy and Art and Creative Therapy, Parent and Child Well-being Group to its service users. Although the service was impacted by Covid-19 Level 5 restrictions all services adapted to the current guidelines and maintained services in 2021. An outline of each aspect of the Family Support Service will be detailed below and will highlight emerging themes across the service delivery.*

### **Family Support Service**

*Newbury House Family Support Service has been busy throughout 2021 building its profile throughout the Mayfield, Lotamore, Ballyvolane, Dillon’s Cross, Tivoli and Glanmire catchment area. The profile and accessibility of the service has grown immensely and we now have referrals coming from a wide range of community services, PHN’s, schools, CAMHS and social work departments. All referrals are filtered and assessed so as each referral is destined for the correct intervention and support pathway.*

*During 2021 (January – December), 140 clients contacted the Family Support Service to enquire about supports either for themselves or their children. After an initial client assessment, an assessment of needs is devised and each client is directed to the most appropriate in-house service. During 2021 many of the clients accessing the service presented with issues around isolation, anxiety, parenting, grief and loss, inability to access community services, financial stress, food poverty and a great desire to reach out for appropriate support.*





### Themes and Challenges:

The Covid-19 Pandemic challenged the service in many ways and culminated in Newbury House adapting in a progressive way to meet the constant challenges that came through the door. Many of the clients continue to actively engage in regular appointments with the family support service.

#### Meitheal Lead Practitioner

The Family Support Service incorporates the Meitheal Programme and during 2021 we had 20 families engaging in Meitheal. During the year, 5 of these files were closed to Meitheal as the goals and outcomes that were originally set had been met.

A total of 7 Meitheal Families were escalated to Child Protection Services during the year and 5 were subsequently closed and returned to the Meitheal Service.

2 Meitheal families continue to engage with Child Protection Services and as a result their files are now closed to Meitheal.

#### Psychotherapy Service

The Family Support Service engages two Psychotherapists and one graduate therapist who offer a total of 10 sessions per week.

The therapists have offered *approximately* 303 individual sessions to 34 individual clients during 2021. Of these clients 4 were aged under 18 years. We currently have 16 clients waiting on a first appointment with a therapist.

### Themes and Challenges

During 2021 we have seen a dramatic increase in clients seeking support, this displays an increased knowledge around mental health and well-being brought about by the effects of the Covid-19 pandemic. Many clients are presenting with issues around complicated and complex grief, anxiety and low mood, loneliness and isolation, loss of confidence and self-esteem, relationship difficulties including the effects of coercive control, the effects of addiction relapse on families, domestic aggression, self-harm and suicide ideation and sadly, the effects of suicide on family members. Whilst the therapists are conscious of the long waiting list, it is not always possible to address such complex issues using CBT or Brief Counselling techniques. Many of these clients have experienced adverse childhood experiences (ACE's) and emotional neglect, therefore it is not always possible to complete therapeutic interventions within a short timeframe.



The therapists have a duty of care to each individual client to work in an ethical and appropriate manner so as to build resilience, self-care and self-resourcing techniques. Clients who are currently waiting for a first appointment are offered the support of the Family Support Worker as a means of sustaining them emotionally while they are on the waiting list.

### Play Therapy

The Family Support Service engages 2 Play Therapists (one is a student therapist who began in October) who offer a total of 7 sessions per week. The therapists would have offered *approximately* 120 individual sessions to children. The therapists have completed therapy with 23 children and there are currently 6 children actively engaging in play therapy. We have approximately 26 children waiting on therapy.

### Themes and Challenges

Many of the children presenting for therapy have found Covid-19 very difficult. There has been an escalation in anxiety, loss of confidence and self-esteem, inability to form and sustain relationships, loneliness and grief, fear of death and dying and family changes due to parental separation. We have seen a large increase in referrals from local schools as they are witnessing the emotional changes in the children attending their schools.

### Art Therapy

The Family Support Services engages 1 Art and Creative Psychotherapist to work therapeutically with children and teens and she offers 3 sessions per week. The therapist has engaged in *approximately* 105 individual sessions and has already completed therapy with 9 children and teenagers. We currently have 12 children waiting for a first appointment.

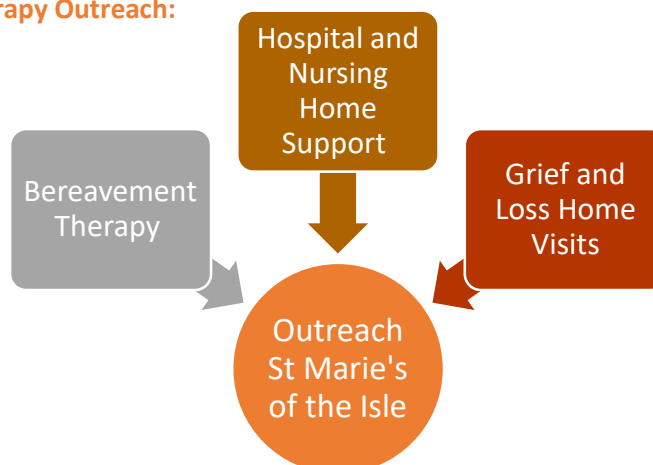
### Themes and Challenges

Many of the children on the waiting list have experienced emotional upset and loss of routine during the pandemic. Some of the presenting issues are distress around their sexuality, suicide ideation and self-harm caused by the loss of a peer to suicide, experience of being bullied, inability to transition to secondary school and family break down. Many of the referrals received are from Meitheal, community groups, schools and parents.

### Parent and Child Wellbeing Group

We launched our Parent and Child Wellbeing Group at the beginning of November and all of the participants gave birth during the pandemic. The 6 parents and their babies and toddlers found the isolation during the prenatal months very difficult, whilst the babies had a different experience of socialisation from birth onwards. Many children did not meet their grandparents or extended family for several months and mothers found the experience very lonely. We have incorporated the service of our Play Therapist into the group for a short piece of work using Terra-Play techniques which will help the bonding and socialisation for the group.

### St Marie's of the Isle – Bereavement Therapy Outreach:



Newbury House Family Centre utilises its counselling budget to support families in the greater Mayfield catchment area. However, a portion of the current funding is allocated to St Marie's of the Isle Bereavement Service. Although the budget is quite small for the group they have used it effectively to offer bereavement support and telephone counselling support to the community. During 2021 the team offered 31 sessions of therapeutic support to at least 10 clients. They also adapted to Covid-19 restrictions and moved their service to telephone support making over 60 calls to clients on their list.

### Themes and Challenges

2021 was a very challenging time for anyone who experienced loss or illness and it required sensitivity, care and adaptability. The team understood the vulnerability of families who had been bereaved in 2021 and did 12 'post-funeral' home visits. Recognising the vulnerability of those isolated in Nursing Homes and Hospitals was paramount to the St Marie's of the Isle team as they did 8 visits in these settings. In the last quarter of 2021 the Team did approximately 6 home visits each week and again reduced the effects of isolation and loneliness for this cohort.

### Conclusion:

2021 has proven to be a very busy and productive year for the Family Support Service. It is a year where we have grown and adapted to the many challenges that have been presented due to the pandemic. We have witnessed a dramatic increase in requests for support from families and we try to address these requests in a timely manner. We are mindful of the vulnerability of the community in which we operate and we endeavour to meet the families in a respectful environment. Some families have the financial capacity to access services at great cost while others are unable to pay and rely on low-cost community services to assist them whenever possible. As society begins to open up we expect a continuing increase in service requests. The presenting issues are becoming more complex and time consuming but we will continue to adapt and grow the service to address the complex needs of the surrounding community.

### Newbury House Family Centre

	Number of Families	Number of Sessions	Number of Completions	Open	Waiting
<b>Meitheal</b>	20	-	5	15	-
<b>Family Support</b>	140	-	-	-	-
<b>Play Therapy</b>	-	120	23	6	26
<b>Art Therapy</b>	-	105	9	3	12
<b>Psychotherapy</b>	-	303	19	9	16
<b>Parent &amp; Child Wellbeing Group</b>	6	5	-	-	-
<b>Social Work Involvement</b>	17 ( <i>Open and/or Step-down</i> )	-	-	-	-

	Number of Clients	Number of Sessions	Telephone Support Calls		
Bereavement Therapy	10	31	60	-	-
Post-Funeral Support	-	12	-	-	-
Nursing Home & Hospital Support	-	8	-	-	-
Home Support Visits	-	6	-	-	-

### Programmes and groups

Irish Cancer Society Free 12 week Quit smoking programme

Since 2016, a Collaboration between Irish Cancer Society, Newbury House Family Centre, Mayfield Community Development Project and Lotamore Family Resource Centre formed a Free 12-week programme.

In Autumn 2022, a pilot Men's Quit Smoking Group ran in Newbury House.

### Mayfield Men's Shed

Mayfield HAZ, Newbury House Family Centre, Mayfield CDP, Lotamore Family Centre and HSE collaborated to create Mayfield Men's shed. First core group of men met May 2016 and commenced operating and meeting in Newbury House every Tuesday from September 2016 until Covid started in March 2020.

In 2021, Mayfield Men's Shed continued to work with Newbury House. The committee linked with Newbury House and attained supports such as the Senior Play Packs and Blue vests and random supports as requested including venue for meetings etc.

**WE CAN QUIT**  
Do you want to stop smoking?

**FREE MEN** over 18 pilot programme to support men quit smoking.  
A free 7 week smoking programme for **Men** offering group support, one to one support and stop smoking medication.

Have you tried to quit before? Do you want support to quit?

**Register for the We Can Quit today!**

**Where?:** Newbury House, Old Youghal Rd., Mayfield  
**When?:** Thursday 7th October 2021 for 7 weeks with option to extend to 10 weeks  
**Call:** (021)4503066  
**Email:** lotamorefrc@yahoo.ie

**FOR MEN**

foróige  
Bourkes Pharmacy  
Health Action Zone

**QUIT**

## Courses and workshops



No ETB courses were run in 2021 due to Covid lockdown and other demands on the business.

Cork City Partnership ran Aromatherapy and Zumba in 2021 onsite.

Marquee enabled Newbury to run workshops/graduations/events outside to minimise covid-19 risks



## Governance Code

Collabration Ireland in consultation with Newbury produced a report which detailed work yet to be completed to meet governance code compliance and the plan for 2022 is to complete many of the major tasks identified.

Some of the work identified that was completed in 2021 was staff consultation which was facilitated by Cork City Partnership, major policies updated and employee documents/handbooks updated in consultation with staff. Website was produced to display many of the required documentations and meet some of the governance code requirements.

## General effects of Covid on Newbury

Closed arts centre til June

Closed one week in preschool

Slowly open to groups from late 2021 to 2022

Covid compliance officers

## Other community work



### Keep Mayfield Clean

Coordinator is one of the main members of the committee and organised Teen camps funded by Cork City Council which produced a film project made by local teens.

Camp was facilitated by Cork Environmental Forum, Mayfield

Arts and Eddie Noonan from Framework Films. Camp was "Don't waste our community"



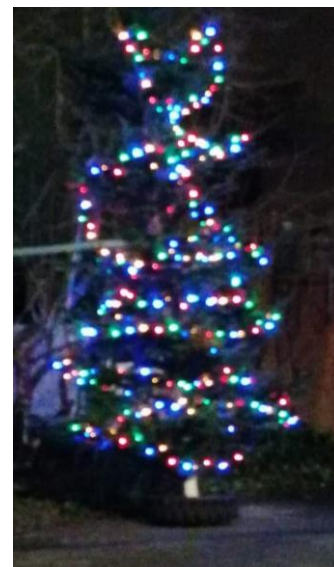


Cork City Council.

Newbury was one of 5 venues in Cork City to distribute blue vests and senior play packs to the local community

Christmas Tree was donated by Castletreasure via Cork City Council to light up the local area for the month of December as there is very limited Christmas display in the area and was seen as one measure to lift the spirits in the local community.

Newbury was one of the groups in Mayfield Interagency group who attained monies for a project to display planters and plants in many locations around Mayfield that displayed positive messages for the general public to see



Due to the government restrictions in place in early 2021, Lady Mayoress was unable to hold her annual coffee morning in hotels. Lady Mayoress held a coffee morning in our centre with restricted numbers in Newbury House garden and utilised our garden and outdoor marquee to hold the event.



## Section 4: Financial Review

### **Review of financial position at the end of reporting period**

Identify any fund or subsidiary undertaking that is materially in deficit

There are no undertakings materially deficit

Redundancy and Insolvency Payments schemes €38357.09

Aidan Logan retired from audits and resigned as company auditor. Newbury procured several quotations and chose Russell & Co as new auditors.

### Acknowledgement of Funders

Newbury House Family Centre wish to especially thank the following contributors to our organisation last year.

Thank you to all our financial funders:

POBAL - Department of Children – Childcare service & Capital funding

HSE – Family Centre Coordinator

TUSLA – Family Centre core costs, Preschool, Baile Beag and Family Support Worker

TUSLA – Low cost counselling service

Department of Social Protection – Preschool Food grant

Cork City Council – Annual Grant– Mayfield Arts

Annual Grant – Baile Beag

Waste Prevention Grant – Teen Environmental Workshop

Emergency Fund – Parent & Children Let's get together

BTEI – Arts education programme

ETB – Tutor hours for Mayfield Arts QQI programme

Cork City Council Ward Funding from Cllr Ted Tynan and Cllr Joe Kavanagh for Baile Beag crèche.

Thank you to all funders and organisation for non-financial support

Cork City Partnership for providing tutor and tutor hours for aromatherapy and Zumba. Facilitated staff review and report for staff and board.

ETB Education Training Board for providing us ETB hours for our tutors on both our QQI programme and our BTEI community education programme

HSE Health Service Executive – advisory support for Coordinator.

Cork City Childcare for their support to our board of directors, childcare support, provision of training and advisory support.

HSE Happy Talk for providing our Happy Talk programme to both our preschool and creche

Mayfield/Old Youghal Road Project CLG – 10 CE staff from both the childcare project and other project placed in all sections of Newbury, our childcare service, arts centre and family centre.

### **Movements changes**

#### **planned actions to improve ensure sustainability**

Board of management plan the following to ensure sustainability:

Building wages reserves to cover any possible future redundancy payments in the event of insufficient funding to continue any of the services that Newbury provides.

Actively seek capital funding to carry out essential repairs to buildings and to build reserve to meet any possible future risks to property

To review annually risks to Newbury's activities and property.

To hire consultant to carry out research and present report to board of management for possible future endeavors for Mayfield Arts

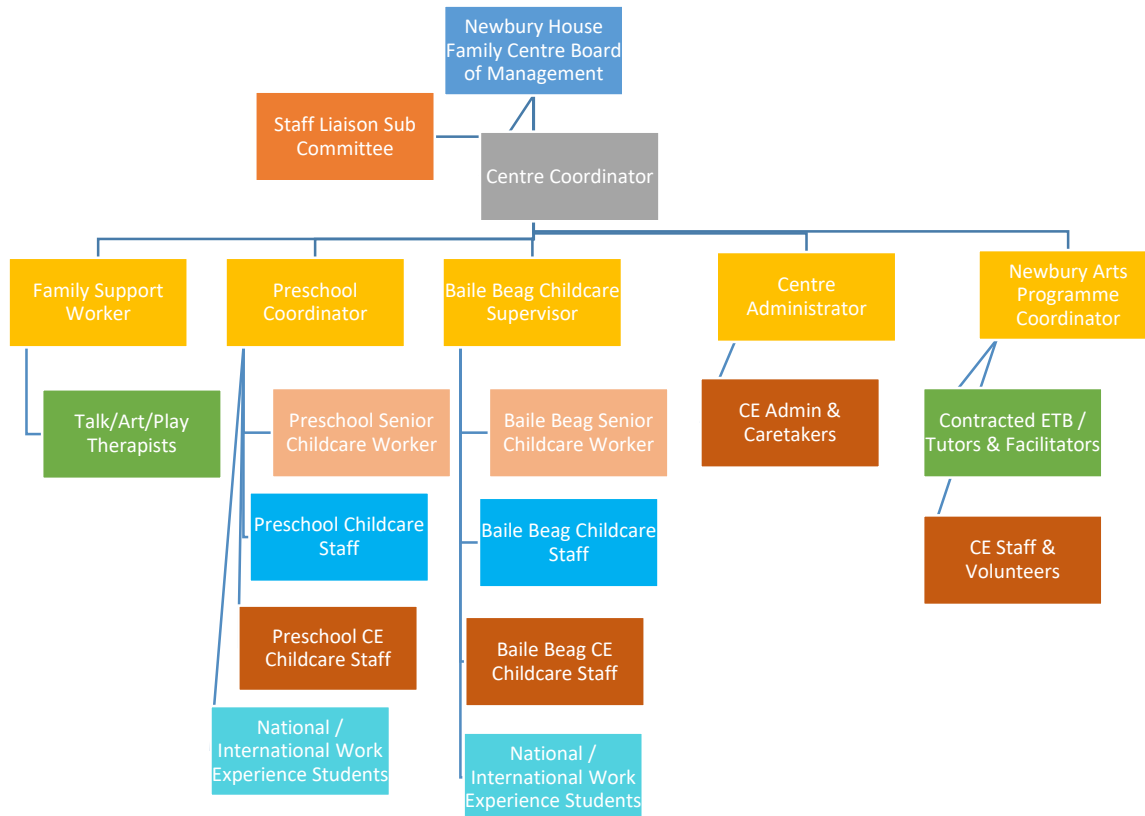
To undertake only self-sustaining projects that fit within the purpose of Newbury's objectives.

In 2022 to undertake tasks assigned from Collaboration Ireland Report e.g. workforce planning, strategic planning

## Section 5: Structure, Governance & Management

### Organisation Structure

#### Newbury House Family Centre Management & Staffing Structure



### Governance

Newbury House Family Centre Ltd. Management Committee

**Chairperson:**

Mar Davis,

**Secretary:**

Mary Foley

**Treasurer:**

Sr Imelda Harrington

**Other Directors:** Sister Imelda Harrington

Eileen Lehane

Anne Treacy

**Other Board Members**

Mary Kiniry



## Staff & Volunteers

### **Newbury House Family Centre Ltd. Staff**

#### **Coordinator**

Rosella Sheehan

#### **Administrator**

Valerie Hourigan  
Dean Skellington CE  
Jackie Cummins CE – to April 2021  
Carolyn O’Keeffe – From November

#### **Therapists**

Mary Looney – Psychotherapy & EMDR  
Gill McCormack - Psychotherapy & EMDR  
Helen O’Brien – Play Therapist  
Amy Burke – Art Therapy  
Kristen Mocke – Student Play Therapy  
Grainne Ryan – Art Therapy  
Sharon Welch – Student Compassion Focused Therapy

#### **Pre-school Coordinator**

Leslie O’Connor

#### **Senior Childcare Worker**

Elaine Sheehan

#### **Childcare Worker**

Linda Hogan  
Shannon O’Regan  
Alan O’Riordain CE  
Katie Walsh April to June  
Danielle Walsh to September  
Lisa Hogan from December

#### **Support Staff**

Adrian Forsythe CE  
Denis Corcoran CE

## **Mayfield Community Arts Centre Staff**

### **Arts Programme Coordinator**

Deirdre Hunt

### **Facilitators**

Deirdre Morgan

Eadaoin Berkeley - September

### **Support Staff**

Billy O'Sullivan CE

Cathy O'Sullivan CE

## **Volunteers**

### **Baile Beag Crèche**

Childcare Acting Manager to August 2021

Elga Holbrook

Childcare Supervisor from August 2021

Ciara McCarthy

### **Senior Childcare Worker**

Wendie Sexton from August 2021

### **Childcare Staff**

Maysa Sanchez to July 2021

Nuria Castelo to June 2021

Rachel Bowen

Emily Hamblin CE & to July

Rachel McCormick CE & June – July

Lisa Hogan from November

Amie Forde CE

*Paid Full-Time	*Paid Part-Time	CE/Supported Employment Schemes	Volunteers	Other	Total
8 + 3(<52wks)	5 + 6(<52wks)	10	6 board 0	4 facilitators 7 therapists	40+9(,52 wks)

## Remuneration of directors

Directors are not paid a salary

Directors receive expenses

## Contact and official details

### Newbury House Family Centre Mayfield Arts Centre



Childcare • Counselling • Family Support  
Health & Wellbeing • Training & Education  
Inclusive Arts • Creative Projects • Outreach  
Organic Gardening • Creative Team Building



**Newbury House Family Centre**  
T: 021 450 79 99  
M: 083 819 87 24  
E: admin@newburyhouse.ie



**Mayfield Arts Centre**  
T: 021 453 04 34  
E: mayfieldarts@gmail.com  
www.mayfieldarts.ie



Newbury House Family Centre, Old Youghal Road,  
Mayfield Cork T23 C3FW



Funded by the Irish Government under the National Development Plan

	Phone Number	Email
<b>Main Office</b>	021-4507999	admin@newburyhouse.ie
<b>Website</b>	www.newburyhouse.ie	www.mayfieldarts.ie
<b>Mayfield Arts</b>	021-4530434	mayfieldarts@gmail.com
<b>Family Support</b>	083-3335749	deirdre@newburyhouse.ie
<b>Childcare</b>		
General Office	021-4507999	admin@newburyhouse.ie
Preschool	083-8198724	Childcare@newburyhouse.ie
Crèche	083-0933364	creche@newburyhouse.ie
<b>Board of Management</b>	021-4507999	chairperson@newburyhouse.ie
<b>Coordinator</b>	083-3328442	Rosella@newburyhouse.ie

## Unusual movements

Baile Beag Crèche: Restructure of crèche including changing of opening hours, staffing structure and minor construction changes

Mayfield Arts: Closed to the public until June 2021. Employee temporary left employment February to June 2021. ETB closed granted exemption to resume onsite courses in June and Mayfield Arts reopened. Mayfield Arts ran adult classes throughout the summer including new taster classes to introduce new participants to arts courses.

Major decline in CE participants has replacements not found as CE participants left project.

Board of management communicated online only from January to June due to covid-19 government restrictions

Majority of groups that utilise Newbury has a venue did not run in 2021 or resumed late in 2021 due to government restrictions. Mayfield Men's Shed Overeaters Anonymous, Lego, Parent & Toddler group

## SORP Guidelines

Audited accounts were done in SORP format